

# The journal

INGATESTONE, BLACKMORE, STOCK & MARGARETTING  
Issue No. 154 February 2014

Trust the domestic cleaning  
experts at **MOLLY MAID**

**MOLLY MAID**

- Uniformed and professionally trained staff
- 100% guaranteed and insured
- Free in-home estimate
- No contracts
- All materials supplied
- Regular or occasional cleans
- More affordable than you think



**01245 494003** emma-brooks@mollymaid.co.uk  
**www.mollymaid.co.uk/chelmsford**



*New Years Eve Ingatestone firework display taken by Camera Club member David Oxley more inside.*

## Location, Location, Vocation...

...visit our team of independent local property experts



Adam Walker MNAEA



Gillian Walker



John Sayers



Claire Niner

**Walkers**  
estate agents

Contact us for a no obligation valuation **01277 355005** [walkersestates.co.uk](http://walkersestates.co.uk)  
90 High Street, Ingatestone Essex, CM4 9DW





## JAMIE WILLIAMS & THE ROOTS COLLECTIVE PRE ALBUM LAUNCH GIG AT THE ALE HOUSE

Jamie Williams & the Roots Collective are making a rare home town appearance at the Ale House in Chelmsford on 1st February in support of their new album DUG DEEP, FOUND STEEL which is due for release on 3rd March.



Jamie Williams & the Roots Collective love playing live & 2014 will see them playing the Broadstairs Blues Bash in February; Cosmic Puffin; Cambridge Rock Festival & the British Stage at the 25th Colne Great British R&B Festival, with more to be announced soon. Their next local gig will be at the legendary Railway Hotel in Southend, home to Wilko Johnson amongst others on Sunday 2nd March.

DUG DEEP, FOUND STEEL their 3rd album in 4 years will be available on Amazon & iTunes as well as for download. The album was recorded at Saint Studios in Burnham on Crouch & was produced by local legend Pete Crisp who captured the essence of their live performances, delivering an earthy, gritty collection of songs chronicling life's vagaries both happy & sad.

The band comprises Jamie on lead vocals, rhythm guitar/mandolin; Lizzie B on vocals/acoustic guitar; Chris Found on lead guitar; Kev 'the Rock' Warner on bass, 'Charity' Nick Garner on harmonica and not forgetting Dan Mills on drums.

There's certainly an Americana feel to the music, as though the band were born & raised on the Delta... it's groovy, it's rocking" *Firebrand Magazine*

"a gritty sound that made me think of the sound of The Kinks of the mid-sixties (or imagine The Feelgoods with acoustic guitars)" - *Blues In the North West*

For more information and the latest tour dates, please visit <http://www.jwroots.co.uk>



Providing hospice and respite care for young adults with life limiting conditions across Essex

## Is your wardrobe too full?



To help The J's continue our vital work, please **DONATE** your old clothes, shoes, handbags, books, CDs, DVDs and bric-a-brac to The J's!

### HOW TO DONATE:

Drop items off on Sunday 2nd February  
between 10:00am — 14:00pm

At: The County Hotel, Chelmsford, Essex, CM1 2PZ

Call us to arrange a collection on 01245 475474

Visit our website: [www.thejhospice.org.uk](http://www.thejhospice.org.uk) to donate money directly

call: 01245 475474  
email: [info@thejhospice.org.uk](mailto:info@thejhospice.org.uk)  
visit: [www.thejhospice.org.uk](http://www.thejhospice.org.uk)  
UK Registered Charity Number: 1099562



## General Knowledge Quiz - Answers

- |  |                                  |                            |                               |
|--|----------------------------------|----------------------------|-------------------------------|
| 1. Windsor                               | 27. Candle In The Wind           | 53. Black                  | 80. 6                         |
| 2. 9                                     | 28. 6                            | 54. 12                     | 81. South Africa              |
| 3. Edinburgh                             | 29. Mercedes-Benz                | 55. 10 feet                | 82. Alan Shearer              |
| 4. 8600                                  | 30. Wings                        | 56. Over 27 years          | 83. 2011                      |
| 5. Istanbul                              | 31. Distict Line                 | 57. The Sun                | 84. Circumference             |
| 6. 26                                    | 32. Forearm                      | 58. Optic nerve            | 85. 10,080 minutes            |
| 7. Average 238,857                       | 33. Camulodunum                  | 59. Venice                 | 86. 112                       |
| 8. 3                                     | 34. China                        | 60. Glacier                | 87. Sphere                    |
| 9. Oysters                               | 35. Dog                          | 61. Oxford                 | 88. Roy's Rolls               |
| 10. Tribbiani                            | 36. Roald Dahl                   | 62. Dover                  | 89. 22                        |
| 11. Italy                                | 37. May                          | 63. Yellow                 | 90. Emmerdale Farm            |
| 12. Florida                              | 38. The Loire                    | 64. Great Fire of London   | 91. Warwick Davis             |
| 13. Canterbury                           | 39. They are all body joints     | 65. The Tube               | 92. Dave                      |
| 14. 90                                   | 40. Bacon                        | 66. Stratford, East London | 93. Bridge Street             |
| 15. Mr. Jingles                          | 41. Eyelids                      | 67. Twickenham             | 94. Mercredi                  |
| 16. Geese                                | 42. 21                           | 68. The Shard              | 95. Oxford Street             |
| 17. Trevor                               | 43. 10                           | 69. The Clash              | 96. Sam Snead                 |
| 18. Butcher, baker and candlestick maker | 44. Mount Everest                | 70. St. Paul's Cathedral   | 97. William Shakespeare       |
| 19. Animals                              | 45. Tsunami                      | 71. London Heathrow        | 98. Knot                      |
| 20. Sega                                 | 46. O                            | 72. Chimpanzee's/Dolphins  | 99. John Candy & Steve Martin |
| 21. Diagnosis                            | 47. 'A' and 'I'                  | 73. Glucose                | 100. Jeremy Irons             |
| 22. Pink                                 | 48. X                            | 74. Carnivore              |                               |
| 23. 4                                    | 49. United Kingdom and Argentina | 75. 4                      |                               |
| 24. 27                                   | 50. Burger King                  | 76. Aston Villa            |                               |
| 25. Buckinghamshire                      | 51. Kelly Clarkson               | 77. Chelsea                |                               |
| 26. Mickey Mouse                         | 52. Margaret Thatcher            | 78. Manchester City        |                               |
|  |                                  | 79. 26 miles and 385 yards |                               |

*The journal*

## Ingatestone & Fryerning Horticultural Society

### OUTINGS 2014

**RHS Gardens Wisley**  
**Saturday 14 June 2014**  
 Coach & entrance: £16 IFHS member/£19 non-member

**Hampton Court Flower Show (or Palace)**  
**Thursday 10 July 2014**  
 Cost for coach only: £17.00 IFHS member/£20.00 non-member  
 (Does not include cost of entrance)

**Waterperry Gardens, Oxfordshire – 'Apple Festival' Weekend**  
**Saturday 11 October 2014**  
 Cost for coach and entrance : £22 IFHS member/£25 non-member  
 In the case of RHS members who are also IFHS members the cost will be £17 and for RHS members who are not members of the IFHS Society the cost will be £20. This discount only applies to Member 1 in the case of a joint membership.

All tickets to be paid for upon booking.  
 For further information or to book please contact Ann Monk on 01277 352869; details of all outings can be found on the Society's website [www.ifhs.org.uk](http://www.ifhs.org.uk)





CHELMSFORD STAR  
**CO-OPERATIVE**  
 FUNERAL SERVICES

**A Funeral Plan that gives you complete peace of mind...**

Like most things, funeral costs are rising all the time, but with our Funeral Plan options you pay for your funeral at today's prices, with nothing more to pay - regardless of when the funeral takes place.

For an information pack simply call us today on...

**01277 350988**

47 High Street • Ingatestone  
[www.chelmsfordstarfunerals.co.uk](http://www.chelmsfordstarfunerals.co.uk)






**UPSTAIRS  
DOWNSTAIRS**

*The Professionally Trained Cleaning Service*

- All housework undertaken, from basic hoovering to dusting to major spring cleans
- All to a very high standard
- Guaranteed service tailored to your needs.

**01621 772750**

- FREE NO OBLIGATION QUOTES • REFERENCES ON REQUEST
- ALL CLEANING MATERIALS SUPPLIED AND FULLY INSURED
- WE COVER YOUR AREA

*Est Since 1996*



## The Music of Mozart

Litaniae Lauretanae - Coronation Mass  
 Piano Concerto in G - Concert Rondo in D

with

**The Covent Garden Chamber Orchestra**  
**Kirsty Hopkins** (soprano) **Kate Telfer** (mezzo)  
**David De Winter** (tenor) **Colin Campbell** (bass)  
**Tim Carey** (piano)

**Saturday 15<sup>th</sup> March**  
**at 7.30pm**  
**King Edward VI Grammar School**

**Andrew Fardell - Conductor**

Tickets: Centre £13 (£11 concessions, £5 under 16s)  
 from James Dace & Son Ltd., 22 Broomfield Road, Chelmsford;  
 Kate (07808 584 826), any choir member, or at the door

[www.walthamsingers.org.uk](http://www.walthamsingers.org.uk)

*Waltham Singers: Registered Charity No 1153650*



**Great discounts on heating oil!**



**SAVE £10!**  
 On your next delivery of 900 litres heating oil

**SAVE £25!**  
 On your next delivery of 2000 litres heating oil



[www.bfs.uk.com](http://www.bfs.uk.com)  
 Billericay Fuel Services,  
 Downham, Essex CM11 1QU  
**01268 710310**

Cut out this coupon and Return this advert with your payment. Maximum 1 voucher per household. Offer closes 30th June 2013. Original advert only. Photocopies not accepted.



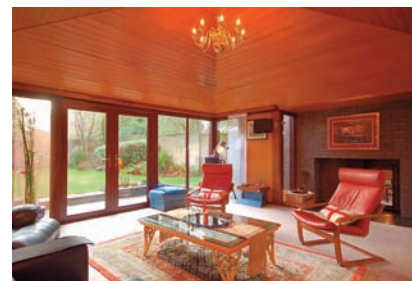
## PROPERTIES OF THE MONTH

### Tor Bryan, Ingatestone - £685,000



Situated on a corner plot fronting Roman Road, this home of architectural distinction offers superb, modern entertaining space, with a striking entrance hall and well planned family accommodation.

The ground floor offers an expanse of social living space to include a lounge measuring 20ft 9 max x 18ft 1, a spectacular entrance hall, dining room/sitting room, good size study, kitchen/ breakfast room



and ground floor WC. To the first floor are four bedrooms - one en-suite and two benefiting from vaulted ceilings - as well as a family bathroom and a good size, bright landing. The size and arrangement of the windows gives excellent natural light, creating bright spaces throughout, regardless of the weather. Externally the property offers a double garage (with personal rear door accessible via a covered walkway from the kitchen), a good size driveway providing private parking, and a generous rear garden with south and south westerly aspects.

Offered with the benefit of NO ONWARD CHAIN. Viewings by appointment via Walkers on 01277 355005.



## PROPERTY OF THE MONTH

ESTABLISHED 1894  
**Hilbery Chaplin**



### *Beautifully situated and presented apartment located amongst picturesque surroundings in the heart of Fryerning.*

Quite simply a unique FOUR bedroom apartment situated within a part moated, Grade II listed former Manor House with origins dating back to 1732, occupying a prominent position within the heart of Fryerning. Of notable architectural interest and offering many period features including 10ft high ceilings an easy rise staircase, evidence of original window shutters and wide hallways with original mouldings. The accommodation offers a bright dual aspect sitting room with picturesque views of the gardens, separate dining room and fully fitted kitchen. The Master suite has a large four piece ensuite and dressing room with extensive range of fitted wardrobes. Three further bedrooms and family bathroom. Of further interest is the impressive entrance vestibule together with a spacious hallway and landing offering additional concealed storage. The property further benefits from its own garden amidst the grounds which has been beautifully landscaped in keeping with its surroundings and planted with a traditional English Country Garden theme. In addition to which there are a garage, potting shed and summerhouse. This apartment truly needs to be viewed to appreciate both the peace and tranquillity of the location together with the quality and level of accommodation on offer.

EPC Rating D. **GUIDE PRICE £845,000**

**SALES: 01277 356456**

**LETTINGS: 01277 263444**

[www.hilberychaplin.co.uk](http://www.hilberychaplin.co.uk)



## To wear or not wear a Helmet on the slopes?

Following Michael Schumacher's recent devastating accident the debate has been reignited on whether to wear or not wear a helmet on the slopes.

With about 60% of skiers in some European resorts and almost 90% of snowboarders now wearing helmets, there is still a large group of people who don't wear a helmet. So, let's look at the main issues that affect helmet wearing?

### Does a helmet really improve my safety upon impact?

The answer is, it depends upon the speed of impact. Helmets are designed to protect and absorb impact at speed of up to around 25 km/h – 15mph.

At much higher speeds, snowsport helmets cannot practically be the thickness and weight required to absorb the impact completely.



Salomon - Icon Air helmet

However at more controlled speeds a recent study from brain injury charity Headway found:

Forces exerted on the skull were "four times less" when head protection was worn. A helmet's liner absorbs a proportion of the impact; the acceleration of the head is reduced; and the impact on the skull is spread over a larger area.

So, realistically we have to look at helmet wearing as part of an overall safety approach. A helmet will help protect you from more serious head injuries on impact whilst maintaining sensible speeds on the slopes, which will also help protect those around you from all sorts of injuries. A helmet on its own will not improve slope safety, it can help make you safer but being a responsible slope user goes a lot further in making everyone safer.

"Quite often impact at very high speeds is the result of skiing or boarding out of control."

So – this leads on to our next question.

### Does wearing a helmet make people ski or board faster?

One of the arguments against wearing helmets is that people ski or board faster because they feel more protected, and as a result become more of a danger to their fellow slope users and themselves.

People need to know that a helmet doesn't make you invincible and they shouldn't be skiing or boarding at speeds or in a way that they wouldn't do without a helmet.

### Are helmets heavy and uncomfortable to wear?

One main reason why skiers in particular resist wearing a helmet is that they are just not used to it. They think it will be very heavy, sweaty, uncomfortable and not look stylish enough.

Helmets are now more stylish than ever before and a lot lighter than you'd imagine - most weighing around the 500g mark. They are warm, and if you choose a model with adjustable ventilation, you can open the vents when you need to make it more breathable. No need for a sweaty head! See the Scott – Roam helmet with adjustable ventilation (pictured left).

When choosing a helmet, go to the store and try on different makes, because most often you will find one make matches your head shape better than another. This you cannot see from an image in an on-line shop!



### So do I convert to a helmet?

Michael had been wearing a helmet which broke on impact whilst skiing inbetween pistes at Meribel. However doctors have said that if he had not been wearing a helmet he would most probably have died then and there on the piste.

It's personal choice. More people than ever are wearing helmets out there and there's no escaping that.

So after around 25 years of skiing I finally converted to helmet wearing. Mainly because having been taken out by an "out of control" skier in the past, I now feel that I would be vulnerable to head impact from a collision with a skier or boarder who is wearing a helmet when I'm not.

You can be a very capable skier, control your speed and slope awareness, but you cannot control that of those using the slope around you! I feel safer buckled up!

The Alpine Room in Danbury sell 5 different makes of snowsport helmets. Salomon, Scott, Smith, Bern and Uvex. Come and view our ranges where we can measure your head and help you find the make and style that fits your head shape most correctly. Visit the Alpine Room at 71 – 73 Main Road, Danbury, Essex. CM3 4DJ or find them on-line at: [www.alpineroom.co.uk](http://www.alpineroom.co.uk)

### Alpine Room

71 - 73 Main Road, Danbury, Essex. CM3 4DJ  
Telephone: 01245 223563

A specialist snow sports shop  
[www.alpineroom.co.uk](http://www.alpineroom.co.uk)

## Chelmsford Star Searches for New Charity of the Year!

Local Co-operative Society, Chelmsford Star has embarked on its annual search for its next 'Charity of the Year' for 2014/15. Pauline Dodd, Society President said; *'The Board of Directors are currently looking for local registered charities to put themselves forward as potential candidates backed up with a written statement on what the funds are required for. They compile a short list in early March and then invite the 850 members of the Society's employees to vote on their preference.'*

The name of the charity with the most votes is declared at the annual general meeting at the end of April. After which the new charity and Society work together on fund raising ideas for the year, including collecting tins featured at over 150 till points as well as sponsored events and raffles.

As the Society trades from 49 branches from Braintree to Southend-on-Sea, prospective candidates should be able to demonstrate that their cause would be recognised by customers across all stores. The chosen charity is then encouraged to work with the Society's stores and offer assistance and support in all major initiatives as and when required.

Chelmsford Star is now more than half way through with this year's nomination, Essex Dementia Care.

Debbie Davis, Fundraiser at Essex Dementia Care said; *"We were delighted to have been chosen as Chelmsford Star's 'Charity of the Year'. The money raised will make a huge difference by enabling us to assist many more people with dementia."*

In 2012/2013 the Society raised just over £36 000 for Canine Partners (Essex) and over the past 6 years has raised in excess of £180 000 for Essex charities. Interested parties should email Pauline Dodd, President at [coty@chelmsfordstar.coop](mailto:coty@chelmsfordstar.coop) or write to her at 220 Moulsham Street, Chelmsford, Essex, CM2 0LS by Friday 28<sup>th</sup> February, 2014.

## Also ... New Year, New Challenge?

Local Co-operative Society, Chelmsford Star is currently on its annual recruitment drive to fill vacancies within its governance structure through its popular 'Meet the Directors' evening. The event aims to discuss the options available including the Board, the Membership Committee and the Members' Council.

Now in its 147th Year with an annual turnover fast approaching £100m, the society is one of Mid- Essex's biggest employers, with a workforce of over 800.

The strategy and way forward for this ambitious organisation is determined by a non executive board of 10 Directors, all of whom are voted into their position by the membership.

These Directors come from a variety of background; some are employed in commerce and industry, whilst others are now retired. However, they all have two things in common – a belief in Co-operative Principles and a desire to work together for the benefit of all Members and the community.

They meet monthly in the evening with the Chief Executive Officer, whose role is to guide and advise the Directors before implementing agreed policies. All Directors give at least three hours a week to their position and receive regular training.

If you have enthusiasm and experience in matters that could benefit other members, customers or the communities in which it serves then you may be just what the Society is currently looking for. For those that may wish to be less involved initially, there are elected places available on both the Membership Committee and Members' Council. These meet six and four times a year, respectively.

So, if you need a fresh challenge, believe in the ethics of the Co-operative and are people minded this could be a rewarding option. Why not find out more by contacting the Society for more details or reserve a place at the 'Meet the Directors' evening on Tuesday 25th February in the 'quadrant' department store, Chelmsford. Doors open at 6.30pm for a 7pm start.

Simply ring Ellen Tredwin on 01245 216916 or visit our website [www.chelmsfordstar.coop](http://www.chelmsfordstar.coop) for more details.



## Brentwood and District Fine Arts Society

Nicola Smith's talk to the Society in January was on "Pugin and the Gothic Revival". It was a striking tale, which she brought to life in her talk and in her illustrations.

Augustus Pugin's life was short - he was born in 1812 and died in 1852. His father, Auguste Pugin, was a draughtsman who had settled in England to escape the French revolution. He was a Gothic enthusiast and published books of architectural drawings on Gothic buildings. Pugin learned drawing from his father and worked in his office.

Pugin started to get commissions of his own. Then, in 1834, his life was transformed when he became a Catholic, leaving behind his mother's Scottish Presbyterianism. From then on, his approach to architecture and to life reflected his Catholic morality. In particular, he rejected the utilitarian view of church building, designed to provide maximum space at minimum cost. Equally, he rejected what he saw as the hypocrisy of decoration for decoration's sake. Decoration was good, but it must be integral to the design.

A further transformational milestone came in 1836, when he published "Contrasts", a campaigning book which argued for a return to medieval architecture and values. In a series of drawings he contrasted medieval buildings and compassion with the buildings and harshness of 1830. It was so successful that a second edition was published in 1841. It was influential too, charting the way for a stronger Gothic revival.

Conversion to Catholicism did not make life easier for Pugin. Legal discrimination might have ended with Catholic emancipation, but prejudice remained. On the other hand, he got commissions from the Catholic community. This could be problematic, when poor Catholic parishes had not the money to build the sort of church Pugin favoured. But wealthier Catholic patrons like the Earl of Shrewsbury did enable him to create striking buildings like St. Giles' Catholic Church, Cheadle.

A major opportunity came with the competition to design the new Houses of Parliament to replace medieval buildings lost to fire. He helped the winner, Charles Barry, with the Gothic design. Charles Barry then invited him to supply detailed designs for the interior. Pugin designed everything, even things like umbrella stands and desk calendars, for which no medieval model existed. His designs

influenced many, including William Morris.

His swansong came with the Great Exhibition, where his medieval court at the Crystal Palace attracted much attention.

Pugin worked immensely hard. He also had a demanding family life. Married young, his first wife died in childbirth, leaving him a daughter. His next wife, who died in 1844, bore him six children. His third wife bore him a son.

Had Pugin lived, say, ten years longer, he would have become a model for architects and antiquarians. Yet despite his short life, he inspired young architects like Norman Shaw and George Gilbert Scott, who carried forward his vision. In the end, his Gothic Revival triumphed. It was his designs and his ideas that were to be found in the Victorian churches built in the British Isles and beyond. The sadness was that Pugin did not live to see his triumph.

Next month, we hold our AGM and supper at 7 pm on Wednesday 19 February, followed by William Tyler. William, an experienced adult educator and enthusiastic historian, will be talking on "Rose and Thistle", a very topical study of the history of English/Scots relations. This is a members only occasion.

Our next "public" talk is on Wednesday 19 March and is by Kevin Karney. Kevin's talk is on "The Life and Times of the Sundial - a Perspective on Civilisation's most enduring Timekeeper".

After Cambridge, Kevin was a VSO teacher in North Borneo for two years and then worked for 33 years in the oil business in exploration and production, mostly overseas. With a great grandfather and uncle who were notable gnomonists (those interested in sundials), he has had a lifelong interest in the art and science of sundials.

The talk is at the Community Hall, Ingatestone at 7.30 for 8pm. Visitors are very welcome. The entrance fee for visitors is £7.

Full details of our future talks and other activities are on our website [brentwood-dfas.org.uk](http://brentwood-dfas.org.uk)

## Local Banjo Band Plays For Charity

**From Girls' Choir To Banjo Band In 30 Years - and now threatened with extinction!**

**Fun Packed – Lots Of Laughs – Swinging Banjo Music – JOIN THEM NOW!**

The DIGSWELL BANJO BAND, based in Blackmore, Essex, plays regular entertaining charity sessions at venues including Townswomen's Guilds, Women's Institute, and Senior Citizens' Homes.

You have to be a fun person to play the happy sounding banjo like the Digswell mob, currently sporting several banjo players – plus a tuba – a washboard and even a female vocaliste! – and it's not just sing-along stuff that's performed; catching one of the Banjo Band's gigs will have you laughing, and your feet tapping to tunes varying from Latin favourites like La Paloma to jazz standards of the Sweet Georgia Brown variety.

The band began life as an evening class for girls' choir over thirty years ago but somehow metamorphosed into a group having a plucking good time. So strong and irresistible was the rhythm that they were soon asked to play at local venues and have even made a T.V. appearance.

We're sadly lacking in numbers right now but you too could join in the merriment. If you have a sense of humour and are a closet banjo player looking for an outlet or a guitarist/mandolinist looking to have a jolly fine social time, then you will be welcomed with open arms. Tuition can be supplied so you could start right now and join in revelry.

Call David Price on 01277 824616 for a chat.

## PARISH COUNCIL MEETINGS IN 2014

Parish Council meetings are usually held the first Thursday of each month at Seymour Pavilion, New Road (7.30pm).

Press and public welcome to attend.

Dates for 2014 are as follows:

February 6th and March 6th

**You are Invited**

Highwood Village Hall  
Loves Green, Highwood  
Chelmsford CM1 3QG  
10am-12 noon

Home-made cakes  
Cappuccinos/latte teas  
Marketplace of good quality stalls  
Village Agent & Council Information  
Friendship and support  
Community Spirit  
ALL WELCOME!

Please make a note of the dates for **Catch-Up Cafe** in 2014. **ALWAYS FIRST FRIDAY OF EACH MONTH** (except January):- **10am-12 noon**

10th January,	3rd October
7th February,	7th November
7th March,	5th December
4th April,	
2nd May,	
5th June,	
4th July,	
1st August,	
5th September,	



## NEW YEAR! NEW ZUMBA CLASSES!



"Hi ...my name is Christina and I'm a fitness instructor specialising in Zumba and Latino aerobics .

Zumba has revolutionised the way we exercise ,is great fun and a terrific fat burner! Zumba uses easy to follow Latino rhymes such as salsa and meringue in a simple exercise based format. The music is uplifting and the steps are easy to follow....all you need to bring is yourself (of course!) wearing trainers and lose comfortable clothing, a towel (for the sweat!) and a bottle of water.

The classes are only £5 for a one hour session and you pay as and when you come along.

I have been teaching aerobics and fitness for more than 20 years and free lance for the prestigious David Lloyd group of clubs. I love teaching all sorts of exercise classes but Zumba is my favourite and I am thrilled to be teaching some new community based Zumba sessions. The classes are suitable for all ages, shapes and sizes and presented in a relaxed ,non intimidating style .

To find out more or to reserve your first class free, you can contact Lme on **07737 351501**.

Feel the music and let loose!"

MALDON CONSTITUENCY  
IF YOU HAVE A PROBLEM  
JOHN WHITTINGDALE OBE MP  
Will be holding  
ADVICE BUREAUX

**FRIDAY 7th FEBRUARY**  
**STOCK**  
**5.00pm**  
**VILLAGE HALL, COMMON ROAD,**  
**STOCK CM4 9NF**

RING 01621 855663 FOR AN APPOINTMENT

## CHRISTINA SOMERS ZUMBA



The Latin inspired, easy to follow, calorie-burning, dance fitness party. Feel the music and let loose.

**Tuesday@6.30pm**

(Commencing 28th January)  
Ingatestone Community Centre  
7 High Street, Ingatestone CM4 9ED

**Wednesday@6.45pm**

St Peter's Church  
Claughton Way, Hutton CM13 1JS

**Friday@10.00am**

(Commencing 24th January)  
Rising Sun Public House, Function Suite  
Sun Corner, Billericay CM12 9LN

**christina.somers@hotmail.co.uk**

**07737 351501**

**ALL 60 MINUTE CLASSES ONLY £5.00**

## Hairitage

- \* On- trend Hair Design
- \* Cutting Edge Styles
- \* Beauty Services

**SPECIAL NEW YEAR OFFER**

**50% OFF ALL SERVICES**

with Holly & Laura

'You deserve the best **Hairitage** hairdressing experience so call us on'

**01245 256872**

**Opening Hours:**

Mon: 9am - 7pm,

Tues, Wed, Thurs: 9am - 8pm

Sat: 8.30am - 4.30pm

Sun: 10am - 4pm

Kings Head Walk, Chelmsford. CM2 6FH

**www.hairitage.co.uk**

\* Not to be used in conjunction with any other offer



## INGATESTONE AND DISTRICT CAMERA

**You are warmly invited to join us. We meet on a Friday eve in the Parish Rooms Stock Lane at 7.45pm for 8pm start, ring for a programme or go on line  
<http://www.ingatestoneecc.org.uk>**

We continue to welcome new members to the Club, and almost all agree that the Practical and the Competition evenings in terms of learning about our equipment are the most helpful. As a Club we try to have practical evenings to help us all to learn more, so why not join us on the meetings dated below when practical issues are explored?

Our next meeting is on the 7th of Feb when Gordon Branham gives us his International Acceptances. On the 14th we hold our 5th Club competition with Judge Dave Wilcox from Uppminster Camera Club. On the 21st and 28th we have 'Hands on a Laptop' these evenings are designed to help us hone our skills using dedicated software manipulation programmes. We usually have 8 or 9 laptops available and readers are welcome to join us. On March the 7th we explore our skills with 'Table Top Photography' Again join us if you can. Bring your camera!

**Max Carter 01277 226 848. Tom Smith 353645, Roland Neville 354 144.**

**or Elly Dorman 355188**

**Website: <http://www.ingatestoneecc.org.uk>**

**Max Carter Club Chairman**

### Unpublished Mary Shelley letters discovered at Essex Record Office

Thirteen unpublished letters by Frankenstein author Mary Shelley have been discovered in the Essex Record Office (ERO) archives by Nora Crook, Professor Emerita at Anglia Ruskin University.

Professor Crook writes about the find in the latest Essex Record Office blog, published today.

"New Mary Shelley missives surface from time to time, but this is the largest cache to surface for decades," explains Nora, who found references to Shelley in ERO's online Seax catalogue following a Google search.

The discovery of items previously unread by Mary Shelley scholars prompted a visit to the ERO to examine the letters more closely.

"The letters were written between 1831 and 1849," she continues. "Eight of them are to Horatio (Horace) Smith and the rest to his eldest daughter Eliza, aka 'Tizey'. Smith, a stockbroker, wit, and minor author, became friends with Shelley [Mary's husband – poet Percy Bysshe Shelley] in 1817, and handled his money affairs when he went to Italy. After Shelley drowned in 1822 the Smith family befriended his widow. They remained among her warmest friends until her death in 1851.

"The letters show Mary Shelley in many lights – playful, charming, wheedling, fashion-conscious, anxious about riots in Sussex, apologetic, flustered, in pain.

"To me, this is a prime example of how online catalogues of county record archives are helping scholars to 'tread in unknown paths', in Mary Shelley's words.

"Many, many thanks to the superb ERO archivists!

Councillor John Jowers, Cabinet Member for Libraries, Communities and Planning, said: "This discovery illustrates the importance of archiving local documents – many of which have greater significance than first imagined."

The full blog dedicated to the letters, their contents, and how they came to be archived at the ERO, can be read at <http://www.essexrecordofficeblog.co.uk/your-favourite-ero-documents-thirteen-letters-by-the-author-of-frankenstein-in-the-ero>

### Volunteering opportunities for young people

Essex Libraries are looking for young people to volunteer for a variety of exciting projects. The first opportunity is for young people aged 12 to 16 with an interest in art to help develop a project called ImagiNation which has been funded by the National Lottery through Arts Council England.

Over the summer Essex Libraries will be running a series of art workshops for young people. They are now looking for young volunteers to become Project Planners and select the artists for the project and help design the workshops.

The selection of the artists will take place on 21 February in Chelmsford and reasonable travel expenses will be paid. There will also be planning sessions for the summer workshops taking place in May. Young people are invited to volunteer to take part in the artist selection, the workshop planning, or both. The application deadline for this project is 7 February.

Essex Libraries are also looking for young volunteers aged 14 and above to work alongside Essex Library staff to run the annual Summer Reading Challenge, supporting children to take part in the challenge. Last year nearly 44,000 children took part in Essex by reading books to gain rewards. This year's challenge is called Mythical Maze.

Libraries are looking for volunteers who can commit to a minimum of 15 hours from 19 July to 3 September. The closing date for applications is 23 May. To find out more about both opportunities and to apply go to [www.essex.gov.uk/libraries](http://www.essex.gov.uk/libraries) and click on 'Volunteering with libraries'.

Councillor John Jowers, Cabinet Member for Libraries, Communities and Planning, said: "These are fantastic opportunities for young people to engage with professional artists, their library and their local community. It's a brilliant way to meet new people, have fun and it looks great on the CV."



## CAODS SPELL-BINDING 'THE WITCHES OF EASTWICK'

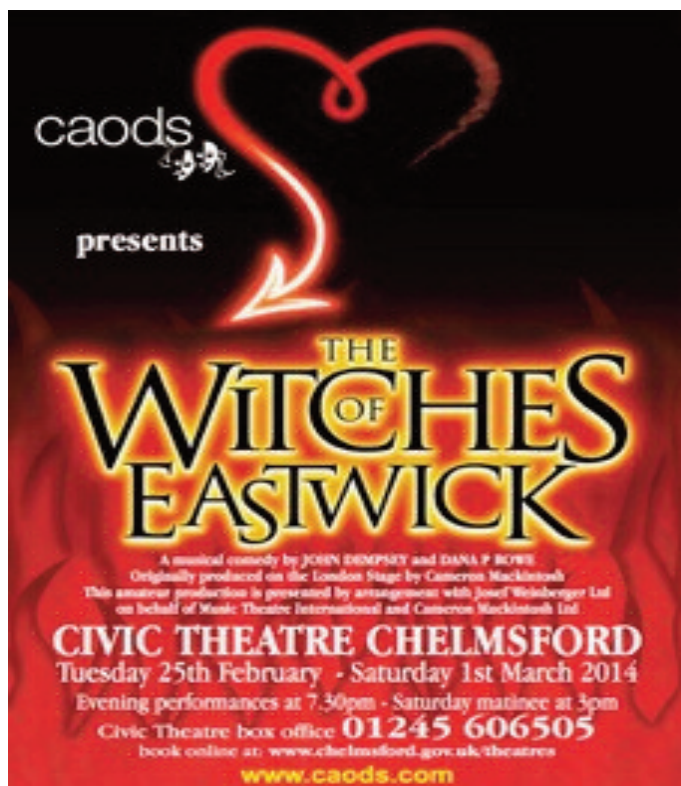
Chelmsford Amateur Operatic & Dramatic Society (CAODS) return to the Civic Theatre, Chelmsford with the premiere of the musical version of 'The Witches of Eastwick', playing February 25th - March 1st 2014. The combination of Sallie Warrington's dynamic direction and choreography with a bewitching cast make this musical comedy unmissable.



In the New England town of Eastwick, a place of clapboard houses and picket fence mindsets, nothing much happens to the bored inhabitants. Three local women - Alex, Jane and Sukie - frustrated by the constant scrutiny and disapproval of their neighbours, fantasize about their ideal man. When their longings are made flesh in the timely arrival of the wickedly devilish Darryl van Horne, all hell breaks loose - quite literally! Darryl seduces each of the three 'witches' in turn and shows them how to expand the forces locked within them through a 'ménage à quatre' that scandalises the town. As their power grows, his corrupting influence pushes them to extremes and the coven resolve to use it to rid themselves of the Prince of Darkness.

For those with expectations based around the acclaimed 1987 film 'The Witches of Eastwick', there are strong parallels to be drawn with the three superb leading lady performances in CAODS production. All have amazing vocals - Claire Carr (Alex), Sarah Barton (Jane) and Alison Hartley (Sukie) play the witches of the title, respectively repressed, tongue-tied and stropky until they meet the demonic Darryl van Horne, and are transformed into vampish femmes fatales. Gareth Barton is excellent as the sycophantic seducer. The devil of course always has all the best tunes, and he swaggers magnificently through the 'Glory of Me' and the louche 'Dance with the Devil'.

'The Witches of Eastwick' has it all - slick special effects and sleight-of-hand magic, flying witches, superb singing, exuberant dancing and plenty of humour too. In every sense, CAODS spring production is a truly magical show! Book your tickets now on tel: 01245 606505 or [www.chelmsford.gov.uk/theatres](http://www.chelmsford.gov.uk/theatres).



## The Fighting Essex Soldier: Recruitment, War and Remembrance in the Fourteenth Century A one-day conference at the Essex Record Office

During the fourteenth century, successive English kings sent their armies to do battle in Scotland, France and Ireland. As a result, the number of men involved in warfare increased dramatically. What's more, these soldiers are well documented, enabling us to find out more about the men who served in these campaigns than any earlier ones, especially those drawn from the gentry and nobility. This conference will take a look at the impact these many conflicts had on Essex society, and how soldiers were remembered after their deaths.

Saturday 8 March 2014, 9.30am-4.15pm

Essex Record Office, Wharf Road, Chelmsford, CM2 6YT

£15 including refreshments and buffet lunch

Please book in advance on 01245 244614

For more information please see

<http://www.essexrecordofficeblog.co.uk/conferences/>

## Opera in the Orchard *La bohème*

SATURDAY 12th July 2014

"BOUNCERS", WICKHAM BISHOPS,  
ESSEX CM8 3JJ

OPERA IN THE ORCHARD was started by Robbie Bishop. Whilst he was working in Rome he went to many operas and realised that opera was enjoyed by all the family from grandparents to grandchildren. With this in mind he opened up the gardens of his home for performances of classical opera, encouraging families to see opera for themselves in a relaxed atmosphere; children come free with their families. This is our twelfth year and many people have been coming from the beginning. This is still a family affair run by Robbie's children, grandchildren and friends.

We are thrilled to have Garden Opera returning to perform *La bohème*. The two previous years have been such a huge success; this is reflected in the many thank you letters we have received.

Giacomo Puccini's romantic depiction of bohemian Paris. This love story drawn from everyday life, has captivated audiences round the world, making *La bohème* one of the best-loved of all opera, containing some of Puccini's finest music.

The plot centres around a community of artists in Paris, particularly between the romantic relationship of poet Rodolfo and grisette Mimi. Their love is not without conflict and they are united tragically as Mimi returns to the garret and dies there, surrounded by her friends.

EARLY BIRD TICKETS £20PP BEFORE THE END OF MARCH

Price of tickets are £30 (1st April to 9th July) £40 (after 9th July)  
Children up to 18yrs FREE

Performance; 17:00hrs (gates open 15:00hrs) Interval 18:00hrs - 19:30hrs

**Refreshments** - Make up your own picnics from the food stalls supplying local produce. Bouncers roast meat rolls, Caprilatte ice-cream, Lottie and Jakes cupcakes, licensed beer tent selling Farmers Ales from Maldon, wine, tea, coffee will be available before the performance and during the interval.

**Camping** - £10 per pitch per night.

FOR TICKETS SALES & INFORMATION VISIT

[www.operaintheorchard.co.uk](http://www.operaintheorchard.co.uk)

Email: [info@operaintheorchard.co.uk](mailto:info@operaintheorchard.co.uk)

Tel: 01621 894112

BOX OFFICE Maldon T.I.C - 01621 856503 for credit card payments



# Margaretting Recreation Ground and Village Hall Trust

Wantz Road, Margaretting CM4 0EP  
(Registered Charity No. 301365)

## What's on in February

### **Mondays**

Pilates 9.30 – 10.30am Main Hall  
7 – 8pm Main Hall

Margaretting Friends – 17<sup>th</sup> – 7.30pm – Chelmer Room – All welcome

### **Tuesdays**

Stitch and Chat – 4<sup>th</sup> and 18<sup>th</sup> 9.30am – 12 noon – Meeting Room  
Art Class – 4<sup>th</sup>, 11<sup>th</sup> and 25<sup>th</sup> 2 – 4.30pm – Chelmer Room

### **Wednesdays**

Dance to Fitness – 9.30 – 10.30am – Main Hall  
French Class – 10am – 12 noon – Meeting Room  
Over 60's Club – 5<sup>th</sup> and 19<sup>th</sup> – 2pm – Main Hall

### **Thursdays**

Pilates 9.30 – 10.30am Main Hall  
7.30 – 8.30pm Main Hall  
Art Class – 6<sup>th</sup>, 13<sup>th</sup> and 27<sup>th</sup> 9.30am – 12 noon – Chelmer Room  
Village Hall Committee meeting – 6<sup>th</sup> – 7.30pm – Meeting Room  
Parish Council meeting – 13<sup>th</sup> – 7.30pm – Meeting Room  
Essex Handicraft – Shaving Foam Marbling – 27<sup>th</sup> – 7pm – Chelmer Room

### **Fridays**

Stitch and Chat – 9.30am – 12 noon – Main Hall

### **Sundays**

Loose Threads Patchwork Group – 16<sup>th</sup> – 9.30am – 6pm – Main Hall  
Archery Club AGM – 2<sup>nd</sup> – 10am – 4pm – Main Hall

For further information please contact the Booking Secretary on: **07794 187741**



## Save the Date for the Chelmsford Marathon!

Could Chelmsford be hosting the most scenic marathon in the South East? The J's Hospice are delighted to announce the date of the very first Chelmsford Marathon - to be held on Sunday 19th October 2014!

Essex boasts some of the flattest and most beautiful scenery in the UK, attracting runners of all levels, and the Chelmsford Marathon promises to establish itself as a unique race not to miss in the running calendar

With a route that takes runners through five of Chelmsford's most beautiful parks; Central Park - where the Marathon begins - through Admirals Park, Tower Gardens, Bellmead Park and the award-winning grounds of Hylands Park, via the picturesque village of Writtle, the route showcases some of the best of Essex countryside.

The idea for a Chelmsford Marathon was generated from some very keen interest and demand from local running enthusiasts who could see the need for The J's Hospice to showcase Chelmsford's new 'city' status and our beautiful parkland.

Over six months of planning, discussions and consultation have brought us to the point of launching the Marathon with the enthusiastic approval and backing of local authorities.

Dominique Brunning, Fundraising Manager at The J's Hospice had the following to say:

"We wouldn't have got to this point without the support of the local community - everyone has recognised this as a unique opportunity; not just runners but the general public have taken the idea - and run with it!"

Potential Marathon runners can register online or using dedicated leaflets from Tuesday 25th February - keep the date in your diary! Entry costs just £28 per person, but of course we're hoping that runners will raise their own sponsorship for a very worthy cause.

This event will raise much-needed funds for The J's Hospice as well as creating a lasting legacy for the City of Chelmsford of a successful marathon that can grow year on year, bringing visitors to the city and highlighting all that the city has to offer.

You can register to take part in the Chelmsford Marathon online by visiting [www.thejshospice.org.uk](http://www.thejshospice.org.uk) from 25th February or call The J's on **01245 475474** to request a registration form to be sent to you.

## Love your library this February for the chance to win an iPad

This February Essex Libraries are celebrating National Libraries Day (February 2014) and all the fantastic services they offer. During February new members who join the library will be entered into a prize draw to win an iPad. Existing members can get involved too; recommend a friend (or friends) to be entered into a separate prize draw with the chance to win an iPad when their friend joins up.

New members are often surprised by the range of services which are available with a library card. Essex Libraries offer much more than books (although there is still an unrivalled range of these too).

- Choose from hundreds of courses with computer based learning and online tutors available for support and guidance
- Help getting online courses - from the basics of using a keyboard and mouse to online banking and shopping
- A wide choice of ebooks and e-audio books compatible with many e-readers, smartphones, tablets, MP3 players and iPods
- Events and activities for visitors of all ages from Baby and Toddler Rhyme Times to the popular Summer Reading Challenge
- Access to the library online from home including the Homework Help Service and many online resources
- Make new friends at a Book Club, Knit and Natter group or view a local art exhibition
- Library job clubs for help with job hunting, CVs and interview practice
- Free use of the library computers and free Wi-Fi for visitors who bring their own laptop
- Helpful booklists for advice on specific topics ranging from health to parenting

Councillor John Jowers, Cabinet Member for Libraries, Communities and Planning, said: "We're quite rightly very proud of Essex Libraries as a place for all members of the community to meet, read, share, enjoy and learn. We would encourage you to celebrate National Libraries Day by joining up by helping to spread the word to friends and family about the fantastic services available."

Essex Libraries are free to join, in person at any library or mobile library or online at [www.essex.gov.uk/jointhelibrary](http://www.essex.gov.uk/jointhelibrary). Prize draw entries will be accepted from 1 February to 15 March 2014. Prizes have been kindly sponsored by BorrowBox.



## WORCESTER AIR LTD.

We would like to introduce our company, Worcester Air Ltd. We are a local family run business who offer an alternative option to the heating and cooling to your home. We not only use renewable energy, which dramatically reduces your carbon footprint, but our products are up to 500% energy efficient, which in turn will reduce your energy bills and save you money.

These days most of us are concerned about ways to protect our planet, especially for the future of our children for generations to come. We are being encouraged to recycle where we can and to make sure that we do not use more than our fair share of our limited natural resources.

We as a company want to help towards this as renewable energy plays a big role in helping towards the environment.

The products we use feature advanced air purification technology, so allergy sufferers and asthmatics especially will find this incredibly beneficial.

We only use products of the highest quality which come with great guarantees, and our trusted qualified plumbers are all local, as we believe in supporting the local community.

The products we use are ideal for a variety of different buildings including, houses, offices, waiting rooms, churches plus many more, and are especially great for conservatories with polycarbonate roofs, which can get extremely hot in the summer and freezing cold in the winter.

Our products have very low running costs and have the added bonus of purer air.

If you would like to find out more information on how much money you could save, how we could benefit you and how you can get one of the most energy efficient products on the market, contact us today on 01245 325701 or 07561159883 or visit our website [www.worcesterair.co.uk](http://www.worcesterair.co.uk)

### \*WE ARE CURRENTLY INSTALLING IN YOUR AREA\*

- Do you suffer from allergies? Including Asthma or Hay fever?
- Are you fed up of energy prices rising?
- Do you want to save money on your energy bills?
- Do you have a conservatory that is too hot in the summer or too cold in the winter?
- Do you want to reduce your carbon footprint & use renewable energy?
- Do you want purer air in your home or workplace?
- Do you want one of the most energy efficient products on the market?

If your answer is yes to ANY of the above contact us today for a free energy assessment.

This can be for any homes (including conservatories, orangeries and extensions), offices, warehouses, churches, dentist/doctor surgeries and many more

### Worcester Air Ltd

Renewable Energy you can trust

Email: [worcesterair@live.co.uk](mailto:worcesterair@live.co.uk)

Website: [www.worcesterair.co.uk](http://www.worcesterair.co.uk)

Phone: 07561159883 or 01245 325701

## Ingatestone Journal Now available on Facebook



[www.facebook.com/IngatestoneJournal](http://www.facebook.com/IngatestoneJournal)

## HEWES security

LOCKS • SAFES • ALARMS • CCTV • GRILLES • ACCESS SYSTEMS

[www.hewessecurity.co.uk](http://www.hewessecurity.co.uk)

Hewes Security is a privately owned specialist security company who have systems and products for the corporate, small business and domestic environments and have served the community for over 40 years.

- Police registered installer
- NSI Gold NACOSS (National Approval Council for Security Systems) approved installer of intruder alarms, CCTV and access control systems.
- We can offer all types of Graded intruder alarm systems and offer both wired and wire-less systems.



**"CALL US BEFORE THE BURGLAR CALLS ON YOU"**

For a free no obligation quotation please contact:  
01245 321114 or [info@hewessecurity.co.uk](mailto:info@hewessecurity.co.uk)

## South Woodham BATHROOM CENTRE LTD

**NOW OPEN  
SUNDAY'S  
10AM to 4PM**

- DESIGN
- SUPPLY
- INSTALLATIONS
- TILING
- PLUMBING
- ELECTRICAL  
WORKS
- PLASTERING



**NEWLY  
REFURBISHED**

12 Reeves Way,  
South Woodham Ferrers,  
Essex. CM3 5XF

**Tel: 01245 324 577  
M: 07702 436877**





## Steve Dodge of the Independent Financial Advice Centre writes Do Nothing and lose £137,500

April the 5th is the end of the tax year and once again we find that a decision must be made regarding pension funds as yet more rule changes come into effect. Doing nothing could easily cost you a fortune.

Currently we are all allowed a maximum pension fund of £1,500,000. It used to be unlimited, then £1.8M now £1.5M and on April 6th it reduces to £1.25M.

Now I can hear the cry "for goodness sake, how many people will this affect"? Well 360,000 of us apparently and the largest proportion of these are here in the South East.

The point is that it is possible to keep the £1.5million pound allowance if you sign a form to protect it, called "Fixed Protection". The downside of this is that you can no longer make any pension contributions, and you must not have applied for any previous form of protection "Enhanced" "Primary" or "Fixed 2012".

So, should you make a large, final perhaps, pension contribution before April 5th? If your fund is over £1.25 million on the 5th April you can also apply for "Individual Protection" so if your fund is say £1.4million you can apply to have that limit instead of £1.25M. The daft thing is if you apply for individual

protection you can carry on making pension contributions!

But why limit your fund to £1.4M when it could be £1.5M. It is possible therefore that the right thing to do is apply for both forms of protection!

Please don't make the mistake of thinking your fund is presently well below the limits, you need to think what it could be in future. An £800,000 fund at 7% growth only takes 6.5 years to reach 1.25M! Even a £400,000 fund could grow to £1.25M in only 17 years without adding any contributions.

If your fund exceeds the limits, when you draw the benefits the surplus is returned to you as a lump sum, LESS 55% Tax!! Getting it right is therefore rather important. Signing a form before April 5th could mean an extra £250,000 in your pension "pot". Do nothing and you could pay £137,500 extra tax instead! April 5th is also the deadline for this year's ISA (Individual Savings Account) allowance. It is possible to invest up to £11,520 per individual in an Equity (Share based) ISA account and pay no higher rate tax (up to 45%), capital gains tax (up to 28%), or have to declare anything to the Inland Revenue.

There was a rumour that the Government would like to stop these accounts, or limit the amount you can invest as they are losing a lot of revenue, so make sure you use the allowance, while it exists.

So should you make perhaps a final pension contribution before April 5th, apply for fixed protection 2014, individual protection, or invest in ISA's both before and after the deadline?

As usual your IFA should have the answers for you but please don't leave seeing them until the last minute, this is a complex situation requiring careful thought not a rushed last minute panic.

**01277 (Billericay) 630873**

97 High Street CM12 9AJ

email: [help@impartialadviser.com](mailto:help@impartialadviser.com)

[www.impartialadviser.com](http://www.impartialadviser.com)

## County Council to launch survey on usage of recycling centres

Essex County Council (ECC) is launching a new survey to look at how residents use recycling services across the county, starting on Monday 27th January 2014.

This survey is the start of a process to review and understand how recycling centres need to change in order to meet the long term requirements of residents, and to ensure this service is delivered in the most cost effective way for Essex taxpayers.

ECC currently operates 21 recycling centres located across the county, at an annual cost of around £6.4m. Significant investment in kerbside recycling services has been made in recent years by ECC and district, borough and city councils, which has resulted in fewer residents needing to dispose of waste at recycling centres. In addition, although many of the centres are modern purpose-built facilities, it may be the case that some of the older sites may no longer be best placed to meet the needs of a modern recycling centre.

ECC is currently facing significant financial challenges and needs to make savings of at least £235m over the next three years. The authority is therefore reviewing spend across all services, and waste management activities have to make a contribution towards this savings target.

The survey will ask residents how they use the recycling centres and other recycling services at present, and what the most important features of the service are to them.

County Councillor Roger Walters, Cabinet Member for Waste & Recycling, said: "The County Council is keen to ensure that it continues to provide the very best recycling services for residents, however maintaining expenditure at existing levels in the current financial climate is unsustainable, and we have to look at where efficiency savings could be made.

"We are keen for as many residents as possible to complete this survey, to find out what is most important to them about our recycling centre service. The responses we receive will be carefully considered and reviewed alongside information we already hold on recycling centre usage."

The survey will be available to complete from Monday 27th January at [www.essex.gov.uk/recyclingcentres](http://www.essex.gov.uk/recyclingcentres). Paper copies of the survey will be available to pick up at libraries and recycling centres. The survey is open until Sunday 20 April 2014.



### Independent Financial Advice Centre

Authorised and Regulated by the Financial Services Authority

**Help & Impartial Advice from Qualified Professionals on:-**

**With access to the most up to date information you can trust us to help you plan for the future.**

✓ Early Retirement	✓ Personal Pensions
✓ Inheritance Tax	✓ Annuity Purchase
✓ Mortgages	✓ Drawdown Annuities
✓ Investing a Lump Sum	✓ Self Invested Pensions (SIPP's)
✓ Investing for Income	✓ Protection (Life & Income cover)

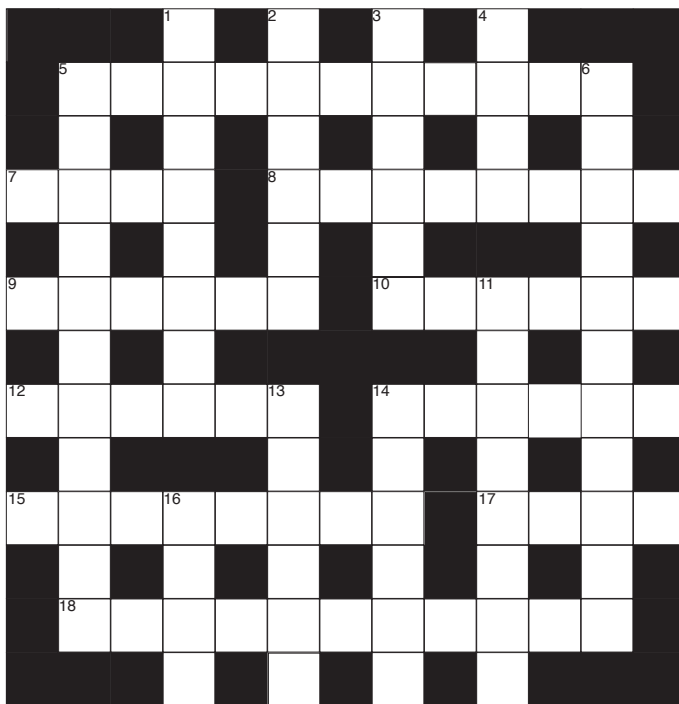
**The Advice Centre Making Sense of a Complicated World**

**Contact us today on**  
**01277 (Billericay) 630873**  
 97 High Street CM12 9AJ  
 email: [help@impartialadviser.com](mailto:help@impartialadviser.com)  
[www.impartialadviser.com](http://www.impartialadviser.com)

YOUR HOME IS AT RISK IF YOU DO NOT KEEP UP PAYMENTS ON A MORTGAGE OR OTHER LOAN SECURED ON IT



# CROSSWORD

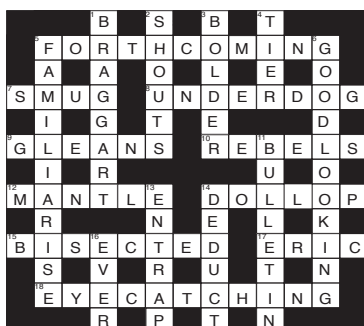


## ACROSS

- 5 Having a row with Tim, go in where there are patient people not yet treated (7-4)
- 7 Dwell tediously on heavenly kind of instrument (4)
- 8 They verify things in a game of draughts (8)
- 9 Alteration in balance of money returned after payment (6)
- 10 Gregarious in the Channel Islands also (6)
- 12 Moves stealthily among commonly disliked people (6)
- 14 Eric's starting being a writer (6)
- 15 Own up to breaking rod in heavy fall of rain (8)
- 17 The impetuous rush out of Ireland! (4)
- 18 Think Dear Ed will turn out to be benevolent (4-7)

## DOWN

- 1 Speeds in to make up medicine (8)
- 2 Move round - and round (6)
- 3 All at sea, Reg consents (6)
- 4 Employment creating musical composition? (4)
- 5 Small firm making chart for the week that shows which way the wind is blowing! (11)
- 6 Academic cap is just the thing for the builder to use when mixing cement (6-5)
- 11 Fast naval vessel taking five to Crete (8)
- 13 She too becomes calm (6)
- 14 Master-switch controlling current (6)
- 16 Not any result from neon production? (4)



**LAST  
MONTHS  
CROSSWORD  
ANSWERS**

## Is Your Neighbourhood Switched On?

Please carry out a weekly task of setting your automatic light timers to come on earlier - It is now starting to get dark at around 16:00

As the autumn nights draw in it's time to think about the burglar out there and not leaving them "tell tale" signs that your home is empty and vulnerable. The art of illusion is to try and make it look as though your home is occupied even though you are not there. Provide that first impression to the "would be" burglar that this house is occupied, it looks too difficult to get into and that if they do try there is a good chance they will get their collar felt!

Lighting, if your house is overlooked and there is the chance of burglars being seen they will prefer to go elsewhere, so get some decent lighting on your house. Dusk till dawn activated lighting on the front and rear with energy saving bulbs, not only deters the burglar but you can see who is at your door or around your home, and also when you return home you have a welcoming light.

Is there clear unobstructed access to the rear? Burglars will prefer to gain access out of sight at the rear. Where possible fence and gate access to rear gardens, top this with some trellis or spiky toppings (the spiky topping requires a warning notice). How about some defensive planting, what's this you ask.....something like Berberus, Pyracantha or Hawthorn around perimeter fencing or anything else you wish to protect i.e. domestic fuel tank (some garden centres sell more established plants).

The illusion: - Try to make it look similar to when you are there - table lamps inside on timers (don't use energy saving bulbs with digital timers it shortens the life of the bulb) or use a "dusk till dawn" sensor (bulbs are now available with a built in sensor), a radio on a talking programme, it all helps. You can even buy a device now called "Fake TV" that mimics the light from a television. Out and about? For a little extra confidence consider carrying a personal attack alarm, many come with a torch and are quite cheap from DIY stores, internet etc. Most all be aware of your surroundings, avoid concentrating on mobile phones and music devices whilst out and about.

If you would like further advice on home security please contact Trisha Staerck on 101 extension 421132

## Wickford Breathe Easy

Wickford Breathe Easy, a social group for anyone affected by lung disease. Meetings take place on the 2nd Wednesday of the month at Small Hall, Our Lady of Good Counsel, 61 London Road, Wickford SS12 0AW, from 1.30 - 3.30pm. We offer mutual support/friendship/guest speakers and COPD information.

Come along (bring a friend) and join us for tea/coffee and a chat.

The speakers booked for the first few months of this year are:-

**Feb. 12th Simon Dinsdale** talk on his time as body guard and protection officer to royals/politicians

**Mar 12th Brenda Weaver & Dog** talk on training Guide Dogs for the Blind

**April 9th Breathe Easy Groups Area Quiz Competition**, open to all. (We could use the help)

**May 14th Entertainment** by Sylvia LLOYD and her keyboard

For further information contact Margaret on 01268 769843 or Dianne on 01268 524023.



## TRADE ADVERTISERS

### APPLIANCE REPAIRS

#### REPAIRS K.S. APPLIANCES

We Repair, Service, Sell New & Reconditioned

**Washing Machines, Cookers,  
Fridges, Freezers,  
Tumble Dryers, Dishwashers**

- \* **Saturday Call Out**
- \* **All Makes & Models**
- \* **All Work Guaranteed**



**01245 225472** No call out charge

### BUILDERS

**TRANSFORM YOUR HOME & GARDEN  
WITH BEAUTIFUL NEW PAVING**

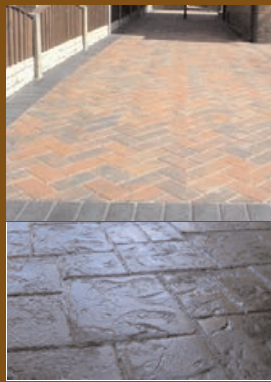
#### A & J TURNER PAVING SPECIALISTS

**DRIVEWAYS • PATIOS •  
POOL SURROUNDS  
OVER 20 YEARS EXPERIENCE**

- BLOCK PAVING
- PATTERN IMPRINTED CONCRETE
- TARMAC DRIVEWAYS
- LANDSCAPING • FENCING
- TURFING • BRICKWORK

**FREE ESTIMATES**

**01277 375901  
Mob: 07887 523455**



Turners Yard Ashwells Road, Brentwood

#### M. P. ANDREWS

**Building Contractors & Extension Specialists**  
Tel: 01277 840703 Mob: 07831 189888



*Established 1986*

- \* property renovations
- \* bathroom & kitchen upgrades
- \* driveways, Patios & Paving
- \* extensions & new build
- \* full planning service
- \* all works fully insured & guaranteed



### CHIMNEY SWEEPING SERVICES

#### Chimney Sweep

Open fires, lined woodburners & stoves swept  
Insurance certificates issued on completion  
Cows fitted All areas covered

**T 01268 730221 M 0771 9442995**

**www.tcsweeping.co.uk**

**TAYLOR  
CHIMNEY  
SWEEPING**



### PROPERTY MAINTENANCE

#### ABRA PROPERTY MAINTENANCE

**35 YEARS  
EXPERIENCE**

**ROOFING & GUTTERING PROBLEMS  
REPAIRS, CLEANING & RENEWS**  
All work insured and guaranteed  
INSURANCE WORK UNDERTAKEN

**SPECIAL  
RATES FOR  
SENIOR  
CITIZENS**

**For a free quote call freephone  
0800 849 9800 or 07702 654558**

### ELECTRICAL & MECHANICAL SERVICES

#### ELECTRICAL SOLUTIONS

- \* Extra sockets & lights
  - \* New fuse boards
  - \* Showers \* Fault finding \* Testing & inspecting
  - \* Port P registered
- Local based company with 20 years plus experience  
Call Mark Pennock for **FREE** Estimates



**Tel: 07734 235215 01245 490771**



#### MARK ONE ELECTRICAL

**OVER 30 YEARS  
EXPERIENCE**

**All Electrical Work Undertaken**



FOUR WINDS, WRITTLE ROAD, MARGARETTING, ESSEX CM4 0EH

**Call Mark Elnaugh on 01277 356119 Mob: 07881 921155**

Email: markelnaugh@aol.com www.markoneelectrical.com

### FENCING AND GARDEN SERVICES



**DANBURY  
Fencing Ltd**  
Established 1971



*"for fencing that doesn't cost the Earth"*

- Extensive range which includes fencing, gates, decking, pergolas & fencing accessories
- Visit our shop for inspiration, advice & service
- Private & trade enquiries welcome
- FSC and PEFC certified - all timber from well-managed sources

- Supply & erect
- Delivery service
- Supply only
- Free estimates

OPENING TIMES Monday to Friday 8.30am - 5pm Danbury Fencing Ltd, Olivers Farm, Maldon Road, Witham CM8 3HY  
Saturday 8.30am - 12.30pm email: sales@danburyfencing.com Tel: 01376 502020



**www.danburyfencing.com**

#### ADM GARDENING

- Free quotations
- Pruning
- Fencing
- Decking
- Patios
- Turfing
- Cement works
- Landscaping
- Pressure Cleaning

**Office: 01245 476993 Mobile: 07990650295**

#### Essex and Suffolk Countryside Landscapes



TREE & LANDSCAPE SPECIALISTS

#### TREE SERVICES

Tree Felling • Pruning • Surgery • Root  
Removal • Rubbish Cleared • Conifer Trees  
Topped and Trimmed

#### LANDSCAPING

Turfing • Patios • Fencing • Fences • Ponds  
Tarmac • Tar • Shingle • Concrete Driveways  
Car Parks • Paths • Brick Work • Block Paving

*Please leave a message when it is convenient to call*

#### FREE ESTIMATES

**Maldon 01621 893691**

**Email: journal@maypolepress.com**

**Tel: 01245 326890**

## LIVESTOCK & GARDENING SUPPLIES



Little Hyde Farm, Ingatestone, Essex CM4 0DU

**Get your lawn mowers and garden equipment serviced ready for Spring!**

**www.dissupplies.co.uk**  
**01277 356881/ 07754 687983**

Open : Mon-Fri 8.30am-5.00pm & Sat 8.30am-1.00pm

*For all your livestock & gardening equipment & supplies*

F27-33B

## LOCKSMITHS



- \* 24 Hr Service \* Lock Changing & Fitting
- \* Garage Door Lock Replacement
- \* Upvc/Composite Doors \* Locks & Handles
- \* Multipoint Adjustment & Repair
- \* Non Destructive Entry to Lock Outs
- \* Fully trained, Insured & CRB Checked

**01245 425944**

## OVEN CLEANING



**let us clean your oven so you don't have to!**

Single Oven	£45	Hob	from £15
Double Oven	£55	Range	£85
Extractor	from £15	Aga side module	£90
Aga2 Oven	£90	Microwave	£30
Aga4	£125	BBQ	£45

*No hidden extras*

**Call Gary: 07795 571 865**  
**01245 409888**

## PLASTERING

### SOUTH WOODHAM PLASTERING

ALL ASPECTS OF SOLID PLASTERING

- \*Plastering \* Rendering \* Dry-Lining
- \* Bespoke Handmade Cornice & Ceiling Roses-Supplied & Fitted

Call Tony on **07867 305 864**

**Checkatrade.com**

Where reputation matters

20 Years Experience - Fully Insured

Local Company

## SMALL ENGINE REPAIRS

PETROL LAWN MOWER & SMALL ENGINE SERVICING & REPAIRS



### Small Engine Doctor

**Routine Servicing Fault Finding**

PETROL LAWN MOWERS - STRIMMERS  
HEDGETRIMMERS - CHAINSAWS  
PRESSURE WASHERS - GENERATORS  
TILLERS - CULTIVATORS  
SHREDDERS - CHIPPERS  
BLADE / CHAINSAW SHARPENING

**CASH PAID FOR OLD MOWERS**

**Tel: 01277 353909 / 07891 342383**

Local Collection & Delivery Available

Think ahead before the Spring rush. Get your machinery sorted now!

## PLUMBING & HEATING

### Anglo Plumbing

Your local family plumber

- Qualified
- Emergency & repair specialist.
- Genuine 24/7 call out.
- No call out fee. Call us anytime.
- All plumbing work undertaken.
- Competitive rates.

Telephone: Danbury 01245 221220

Mobile: 07768 181 181

Email: [info@angloplumbing.co.uk](mailto:info@angloplumbing.co.uk)

Website: [www.angloplumbing.co.uk](http://www.angloplumbing.co.uk)



## CHELMSFORD PLUMBING AND HEATING LIMITED

Reliable family run business

All calls answered personally

Our Charges are competitive, 100% clear and quoted in advance

Boiler services, breakdowns and repairs

New boilers and heating systems

Electrical work undertaken

T: 01245 478 588

W: [WWW.CPH.UK.NET](http://WWW.CPH.UK.NET)

A: 56 HIGH STREET, GREAT BADDOW, CHELMSFORD, ESSEX

CM2 7HH



ELECSA Approved Contractor

## TREE SURGERY

### All Tree Work

Over 50 years of 1st and 2nd generation experience

*No job too small*  
*For free estimates call*

**David Gill**  
Blackmore

**01277 823695**  
[david@xgill.freeserve.co.uk](mailto:david@xgill.freeserve.co.uk)

**Advertise on these pages from just £26.00 per month\***  
**The Journal on 01245 326890**

*\*based on a series of advertisements*

### DANBURY TREE SURGERY

Your local professional surgery company  
Established Over 40 years

**Professional Service at Competitive Prices**

- All Aspects of Tree Work
  - Stump and Root Grinding
  - Shrubs and Hedge Cutting
  - Logs Supplied
- County Council Approved - NPTC and City & Guild Qualified  
£2 million public liability

For a free estimate and advice call **Stuart**  
**01245 222403 / 07951 041872**  
**[danburytreesurgery@yahoo.co.uk](mailto:danburytreesurgery@yahoo.co.uk)**

## Tree Surgeons

[www.acornarb.co.uk](http://www.acornarb.co.uk)

- £5 Million Public Liability Insurance
- Tree Felling & Stump Removal
- Crown Reductions, Lifting & Thinning
- Pruning, Shaping & Balancing
- Tree, Shrub & Hedge Planting
- Stump Grinding & Sites Cleared
- Mobile Wood Milling Service
- Qualified Staff: N.P.T.C & City & Guilds
- All Work Meets With British Standard 3998 Regulations
- Mortgage Tree Reports
- Tree Hazard Evaluation Surveys & BS5837 Reports

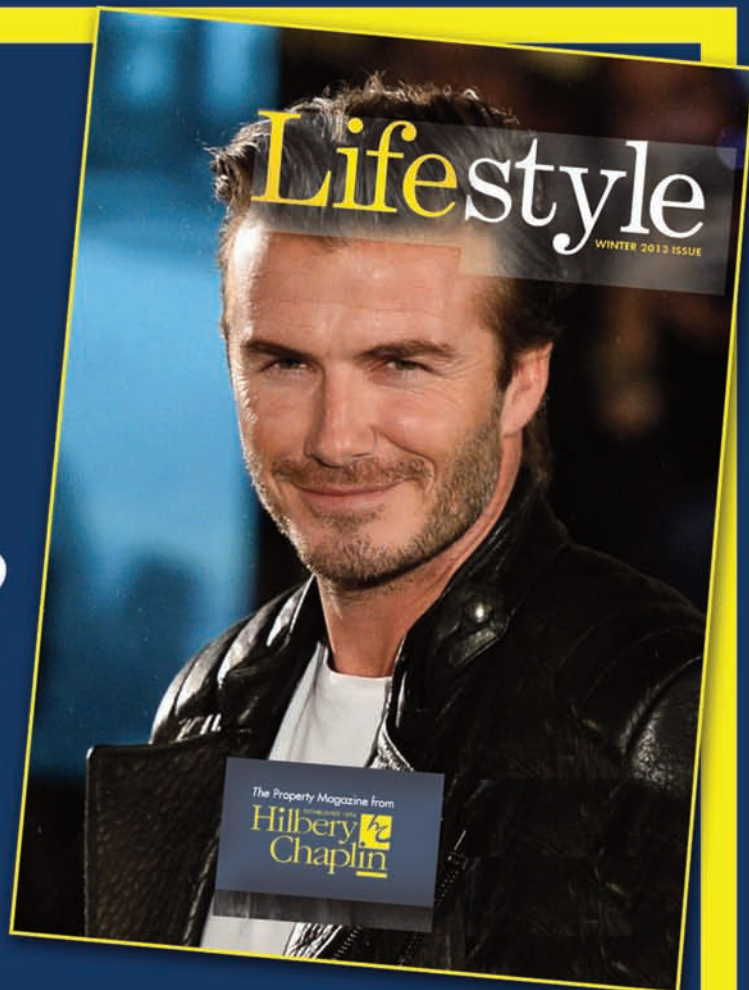
**01245 478 964** Mobile: 07779 375 492

Reeds Farm Nursery, Roxwell Road, Writtle Chelmsford, Essex CM1 3SB





# Selling or Letting?



Make sure your property is in the next  
edition of our Lifestyle magazine!

Call us today for a  
**FREE VALUATION**

**Hilbery** ESTABLISHED 1894  
**Chaplin**

INGATESTONE OFFICE:

SALES 01277 356456 LETTINGS 01277 263444

[www.hilberychaplin.co.uk](http://www.hilberychaplin.co.uk)